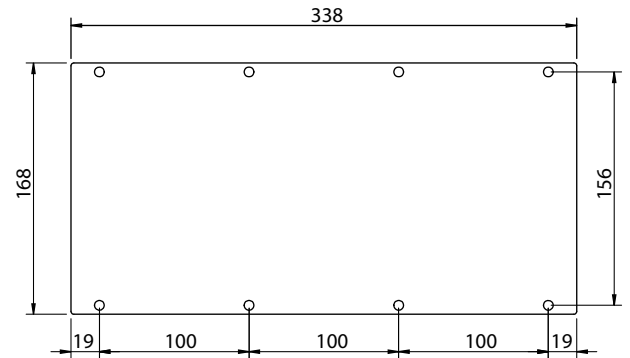


MP

Module Plates



Product Description

The module plates have cut-outs for fixing the KEL range cable entry systems KEL 24, KEL-ER 24, KEL-JUMBO, KEL-DPF, KEL-JUMBO flex and KEL-ULTRA flex. The module plates can be fixed on the following positions:

- Separation plates
- Closed bottom of the switch box
- 25 mm breadboard of the switch box
- 25 mm breadboard bars (Rittal TS System)

The module blind plate without cut-outs (Order No. 43882) is designed for closing unused cut-outs. This module plate can even be used for self-made cut-outs.

Module plates are supplied with a gasket.

Specifications

Material **Carbon steel, zinc-plated**
Aluminum (Order No. 43883)

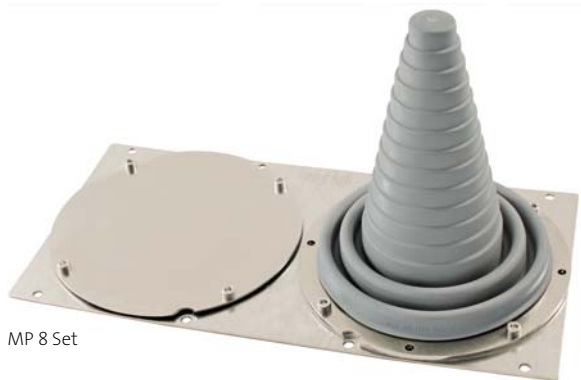
Dimension **338 × 168 × 2 mm**

Fits with

- | | |
|---------------------------------|----------------|
| KEL 24 Cable entry frames | Page 6 |
| KEL-ER 24 Cable entry frames | Page 7 |
| KEL-SNAP snap frames | Page 22 - 23 |
| KEL-JUMBO Cable entry frames | Page 40 |
| KEL-DPF Cable entry inserts | Page 65 |
| KEL-JUMBO flex Cable entry ins. | Page 66 |
| KEL-ULTRA flex Cable entry ins. | Page 67 |
| Blind plates | Page 140 - 141 |

Description	Type	Order No.	Fits with
	MP 0	43882	Module plate, blind
	MP 1	43891	3× KEL(-ER) 24 x
	MP 2	43890	4× KEL(-ER) 24 x
	MP 3	43886	1× KEL-JUMBO 1 1× KEL-JUMBO 2
	MP 4	43888	2× KEL-JUMBO 1
	MP 5	43887	2× KEL(-ER) 24 x 1× KEL-JUMBO 1
	MP 6	43883	5× cut-out M50 for KEL-DPF or KEL-DPZ
	MP 7	43889	Cut-out 3× KEL-JUMBO flex
	MP 8	43894	Cut-out 2× KEL-ULTRA flex

MP Module Plates



MP 8 Set



MP 6 Set

Type	Order No.	Scope of delivery
------	-----------	-------------------

MP 6 Set	43883.001	MP 6, 338 × 168 × 2 mm 5× KEL-DPF 50 1× locking screw M50
MP 8 Set	43894.001	MP 8, 338 × 168 × 2 mm 1× KEL-ULTRA flex 1× BPM-ULTRA

Product Description

KEL / BPM are preassembled in all module plate sets. The module plates can be fixed on the following positions:

- Separation plates
- Closed bottom of the switch box
- 25 mm breadboard of the switch box
- 25 mm breadboard bars (Rittal TS System)

The shipment includes a suitable gasket.

Specifications

Material	Carbon steel, zinc-plated Aluminum (Order No. 43883)
Dimension	338 × 168 × 2 mm