

MAGNUS



MG S - RECTANGULAR COMPACT HOUSING

MAIN FEATURES

Compact and robust thermoplastic enclosure (PBT):
 22 mm fixing
 IP67 rating
 Operating temperature -25 to +75°C
 Coded magnetic operation – Tamper resistant
 Switching distance: 3 - 10 mm
 Sensor with 4 wires: 2 NO contacts
 M8 4-pole connector

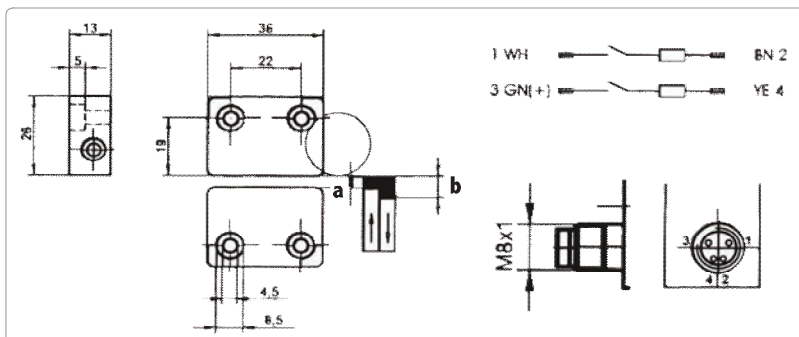
Can be connected to Mosaic safety configurable controller (PL e) or to the dedicated safety control unit MG d1 (PL d).

MG S switches connected to Mosaic safety controller form a certified PL e safety system.



TECHNICAL FEATURES

Model	MG S 20
Ordering code	1291000
Safety Level	PL e together with Mosaic - Up to PL d together with MG d1
Operating voltage (VDC)	24
Switching current (mA)	max. 100
Series resistance (Ohm)	22
Switching power (W)	3
Shock resistance (Hz/g)	10 - 2000/35
Protection rating	IP 67
Temperature range (°C)	- 25 ... + 75
Housing material	PBT
Possible actuation magnets	MG S M to be ordered separately (code 1291001)



Gaps (operating distance) for safe switching function in mm:

	MIN	ON	OFF
MIN	0,5	-	-
ON	3	a	-
OFF	10	-	b

MIN = minimum gap



ORDERING INFORMATION

Each MG B safety magnetic switch includes:

Multi-language operating instructions complete with CE declaration of conformity.

MG B - RECTANGULAR HOUSING

MAIN FEATURES

Robust thermoplastic enclosure:
 78 mm fixing
 IP67 rating
 Operating temperature -25 to +75°C
 Coded magnetic operation – Tamper resistant
 Switching distance: 4 - 16 mm; 7 - 18 mm with magnet MG B M+
 Sensor with 4 wires: 2 NO contacts
 M8 4-pole connector

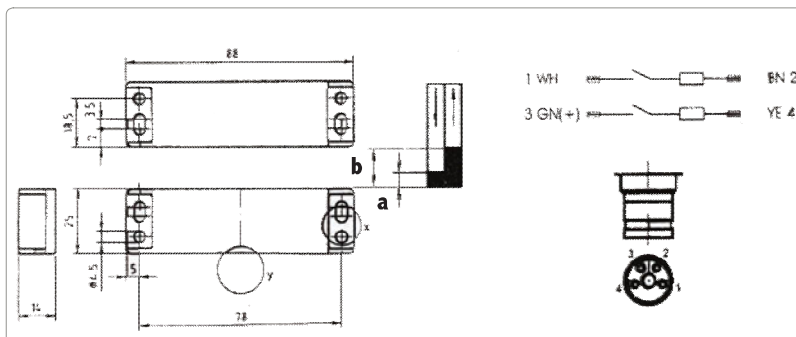
Can be connected to Mosaic safety configurable controller (PL e) or to the dedicated safety control unit MG d1 (PL d).

MG B switches connected to Mosaic safety controller form a certified PL e safety system.



TECHNICAL FEATURES

Model	MG B 20
Ordering code	1291010
Safety Level	PL e together with Mosaic - Up to PL d together with MG d1
Operating voltage (VDC)	24
Switching current (mA)	max. 100
Series resistance (Ohm)	22
Switching power (W)	3
Shock resistance (Hz/g)	10 - 2000/35
Protection rating	IP 67
Temperature range (°C)	- 25 ... + 75
Housing material	PBT
Possible actuation magnets	MG B M to be ordered separately (code 1291011)
Possible actuation reinforced magnets (only use reinforced actuation magnets if a gap of more than 4 mm is unavoidable)	MG B M+ to be ordered separately (code 1291012)



Gaps (operating distance) for safe switching function in mm:

MIN	normal	0,5	
	with + magnet	3	
ON	normal	4	a
	with + magnet	7	
OFF	normal	16	b
	with + magnet	18	

+ = reinforced MIN. = minimum gap



ORDERING INFORMATION

Each MG B safety magnetic switch includes:

Multi-language operating instructions complete with CE declaration of conformity

MG M - M30 HOUSING

MAIN FEATURES

Robust cylindrical thermoplastic enclosure:
 30mm diameter
 IP67 rating
 Operating temperature -25 to +75°C
 Coded magnetic operation – Tamper resistant
 Switching distance: 4 - 16 mm; 7 - 20 mm with magnet MG M M+
 Sensor with 4 wires: 2 NO contacts
 M8 4-pole connector

Can be connected to Mosaic safety configurable controller (PL e) or to the dedicated safety control unit MG d1 (PL d).

MG M switches connected to Mosaic safety controller form a certified PL e safety system.

MG M M
MG M M+



MG M 20

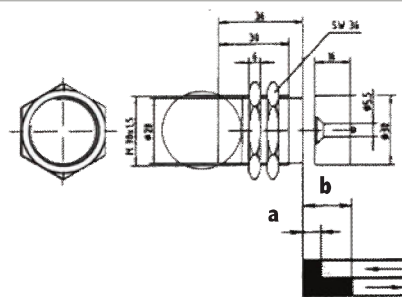
TECHNICAL FEATURES

Model	MG M 30
Ordering code	1291020
Safety Level	PL e together with Mosaic - Up to PL d together with MG d1
Operating voltage (VDC)	24
Switching current (mA)	max. 100
Series resistance (Ohm)	22
Switching power (W)	3
Shock resistance (Hz/g)	10 - 2000/35
Protection rating	IP 67
Temperature range (°C)	-25 ... +75
Housing material	PBT
Possible actuation magnets	MG M M (code: 1291021)
Possible actuation reinforced magnets (only use reinforced actuation magnets if a gap of more than 4 mm is unavoidable)	MG M M+ (code: codice 1291022)

Gaps (operating distance) for safe switching function in mm:

MIN	normal	0,5	
	with + magnet	3	
ON	normal	4	a
	with + magnet	7	
OFF	normal	16	b
	with + magnet	20	

+ = reinforced MIN. = minimum gap



ORDERING INFORMATION

Each MG M safety magnetic switch includes:

Multi-language operating instructions complete with CE declaration of conformity

CONNECTORS FOR MAGNUS

The following connectors are available for Magnus magnetic safety switches

Model	Code	Description
C8 G3	1291070	M8 straight connector, 4-pole, 3 m cable
C8 G93	1291071	M8 angled 90° connector, 4-pole, 3 m cable
C8 G5	1291072	M8 straight connector, 4-pole, 5 m cable
C8 G95	1291073	M8 angled 90° connector, 4-pole, 5 m cable



Magnus magnetic switches together with Mosaic comprise a PL e certified system according to ISO 13849-1.

Certified by 

► See page 165



Magnus magnetic switches together with the MG d1 control unit comprise a PL d certified system according to ISO 13849-1.

Certified by 

► See page 189

