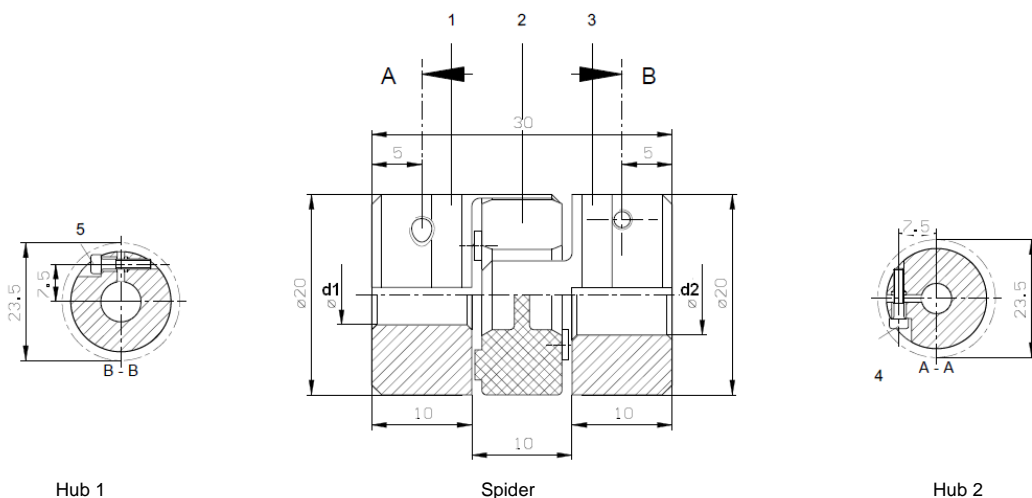


POSITAL

FRABA

CLAMP DISC



All dimensions in mm

Jaw couplings are very simple couplings very commonly used in the industrial automation industry. It is a 3 part coupling, consisting of a spider, and 2 coupling hubs with the holes to secure the shaft. They are plugged in axially and the coupling is backlash free under pre-stress. Since it is mounted under pre-stress these results in smaller surface pressures and consequently higher stiffness of the coupling.

1.1 Technical Data

Hub Material	Aluminium
Spider Material	PUR
Max Speed	19000 RPM
Start Torque	1.8 Nm
Torsion Spring Stiffness	52 Nm/rad
Radial Spring Stiffness	125 N/mm
Mass Moment of Inertia	0.0048 kg/cm ²
Clamping Torque (Max)	0.8 Nm / 6.7 lb-in
Weight	60 gm

CLAMP DISC

1.2 Configuration and Ordering

Description	Part Number	Ø d1 in mm	Ø d2
Jaw Coupling, JC-10-10	29100450	10	10mm
Jaw Coupling, JC-06-06	10017352	06	06mm
Jaw Coupling, JC-06-10	10017353	06	10mm
Jaw Coupling, JC-06-08	10017354	06	08mm
Jaw Coupling, JC-08-10	10017355	08	10mm
Jaw Coupling, JC-06-12	10017356	06	12mm
Jaw Coupling, JC-10-12	10017357	10	12mm
Jaw Coupling, JC-10-1/4"	10017358	10	1/4 in
Jaw Coupling, JC-10-3/8"	10017359	10	3/8 in
Jaw Coupling, JC-06-1/4	10017360	06	1/4 in
Jaw Coupling, JC-"06-3/8"	10017361	06	3/8 in

Disclaimer

© FRABA N.V. all rights reserved. We do not assume responsibility for technical inaccuracies or omissions. Specifications are subject to change without notice.